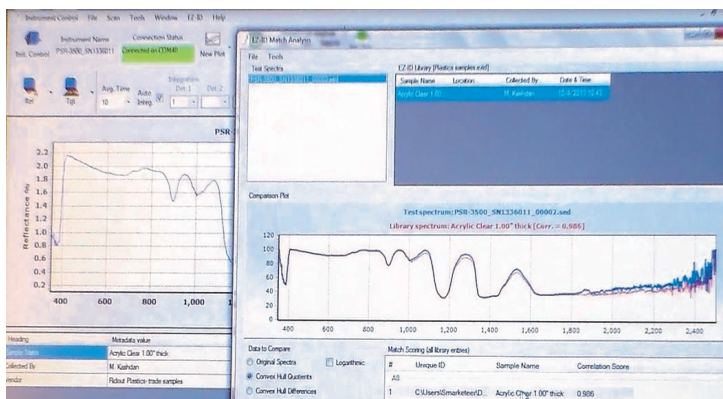


# SPECTRAL EVOLUTION

## EZ-ID Sample Identification and Custom Library Builder

### Identify Your Target Sample with EZ-ID™ Software

*Quickly and Easily Create Your Own Custom Library*



Sample identification has never been faster, easier, or more accurate than with EZ-ID software from SPECTRAL EVOLUTION. EZ-ID provides sample identification capabilities built into SPECTRAL EVOLUTION'S field portable spectroradiometers for applications ranging from vegetation studies, to soil research, crop health, soil characteristics, and more.

EZ-ID allows you to compare your target scans with three built-in libraries or your in-house custom library. You can also create custom libraries using the EZ-ID Library Builder module for canopies, crops, or soils with information like location, researcher, sample name — all critical metadata can be defined and linked to your spectral library and target scans.

EZ-ID software can be used on unknown samples in the field or in a lab. EZ-ID features include:

- ◆ Fast and accurate identification of unknown target sample to known library sample
- ◆ Easy-to-use—just collect your scan using a SPECTRAL EVOLUTION spectroradiometer and see results in real time
- ◆ Simple, consistent user-interface
- ◆ Software provides a weighted score for best matches
- ◆ Include or exclude spectral regions of interest for optimal results
- ◆ Save all files in ASCII format for use with other analysis software
- ◆ Create a specific library for your research project

EZ-ID is a trademark of SPECTRAL EVOLUTION. SpecMIN is a trademark of Spectral International, Inc.

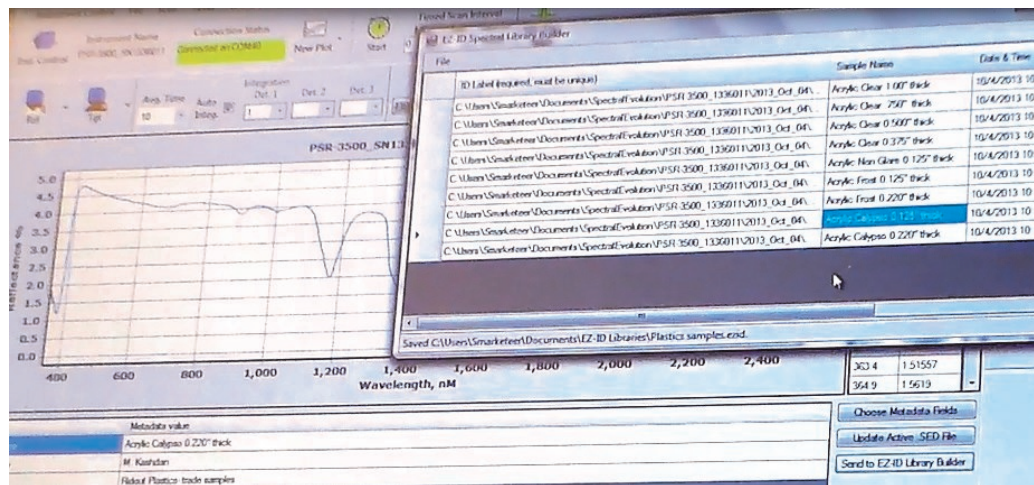


26 Parkridge Road, Suite 104  
Haverhill, MA 01835 USA  
Tel: 978 687-1833 ♦ Fax: 978 945-0372  
Email: [sales@spectralevolution.com](mailto:sales@spectralevolution.com)  
[www.spectralevolution.com](http://www.spectralevolution.com)

# SPECTRAL EVOLUTION

## EZ-ID Sample Identification and Custom Library Builder

### Quickly Build/Add To a Custom Library



Create your own custom library for vegetation, soil, crops, raw materials, plastics, powders — quickly and easily with the SPECTRAL EVOLUTION Library Builder.

- ◆ Scan your sample with a SPECTRAL EVOLUTION spectrometer or spectroradiometer
- ◆ Select the appropriate metadata associated with this scan, including user-defined metadata fields for project date, site identification and location, species identification and name, field of view, solar and observation angle, measurement time and target identification and more
- ◆ Enter values/descriptions associated with the metadata quickly and easily to the library you select—commercial or custom
- ◆ Load your library and run your new target scans against the library for a fast identification

With our EZ-ID Library Builder module, users have the ability to collect the best scans in the least amount of time, quickly identify those scans, save them, and add them to the existing library, or build a new library. With SPECTRAL EVOLUTION spectroradiometers, you have a complete sample identification system for use in the field or in the laboratory that will allow you to create and expand your own spectral libraries for your research projects.



26 Parkridge Road, Suite 104  
Haverhill, MA 01835 USA  
Tel: 978 687-1833 ♦ Fax: 978 945-0372  
Email: [sales@spectralevolution.com](mailto:sales@spectralevolution.com)  
[www.spectralevolution.com](http://www.spectralevolution.com)